

# Distinguishing between *Sciurus niger* (Eastern Fox Squirrel) and *Sciurus carolinensis* (Eastern Gray Squirrel) in Camera Trap Photos

Joe Kolowski, SCBI, 2018



Fox squirrel (*Sciurus niger*)



Thick large head

Muscular, thick body

Tail fringed in orange

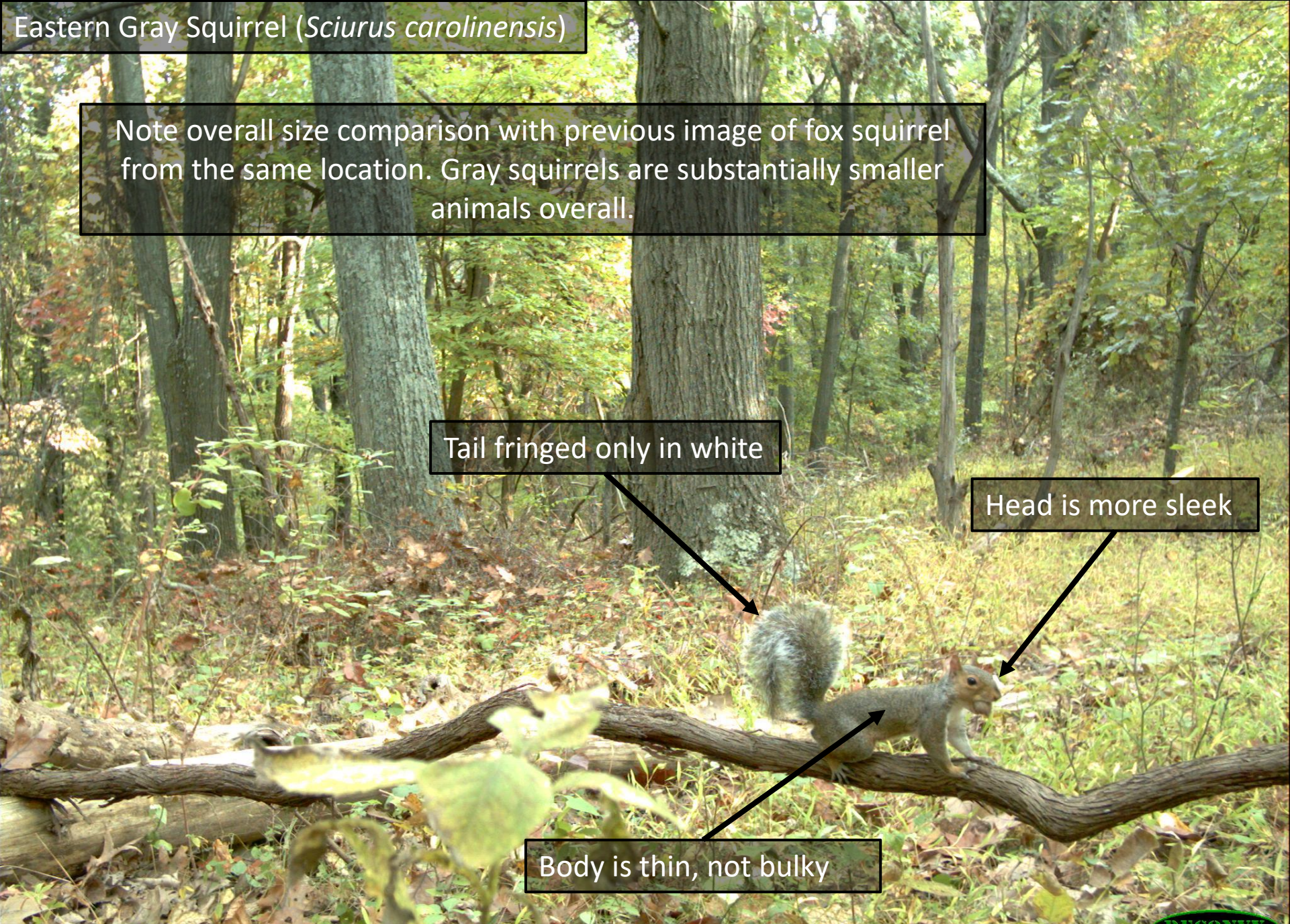
Eastern Gray Squirrel (*Sciurus carolinensis*)

Note overall size comparison with previous image of fox squirrel from the same location. Gray squirrels are substantially smaller animals overall.

Tail fringed only in white

Head is more sleek

Body is thin, not bulky



Fox squirrel (*Sciurus niger*)

Body fur grizzled white, strongly "salt and pepper"



Eastern Gray Squirrel (*Sciurus carolinensis*)



Body fur with sections of gray and reddish brown, less grizzled

Fox squirrel (*Sciurus niger*)

Although body is obscured, orange fringe in tail still visible

Eastern Gray Squirrel (*Sciurus carolinensis*)



Tail clearly fringed in white

Eastern Gray Squirrel (*Sciurus carolinensis*)





Eastern Gray Squirrel (*Sciurus carolinensis*)



Sleek, thin body

Fox squirrel (*Sciurus niger*)

Large head, salt/pepper body fur  
and orange tail fringe all visible



Fox squirrel (*Sciurus niger*)

Tail fringed in orange

Fox squirrel (*Sciurus niger*)

Tail is broad and bulky, nearly same size as body

# Test Yourself

Use in slideshow mode, species name will appear after next click

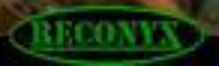
2017-10-25 10:17:42 AM M 1/5

10°C

Fox squirrel (*Sciurus niger*)



SIGMU13



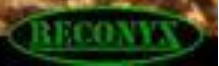
2017-11-04 11:06:23 AM M 1/5

9°C

Fox squirrel (*Sciurus niger*)



SIGMU13



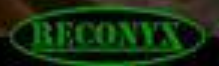
2017-11-15 10:36:46 AM M 1/5

4°C

Fox squirrel (*Sciurus niger*)



SIGMU13





2017-11-15 1:21:20 PM M 2/5

11°C

Fox squirrel (*Sciurus niger*)



SIGMU13



Fox squirrel (*Sciurus niger*)



Eastern gray squirrel (*Sciurus carolinensis*)



Fox squirrel (*Sciurus niger*)



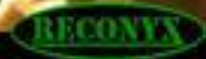
2017-11-15 8:45:04 AM M 1/5

0 -1°C

Eastern gray squirrel (*Sciurus carolinensis*)



NRC110



Fox squirrel (*Sciurus niger*)



Fox squirrel (*Sciurus niger*)



Fox squirrel (*Sciurus niger*)

Note that it is hard to distinguish color from these infrared photos. In this case the size and width of the tail, and the size and width of the head can be used for ID. For many infrared images though, it is too difficult to distinguish these species.



2017-10-05 12:52:43 PM M 2/5

22°C

Eastern gray squirrel (*Sciurus carolinensis*)



SIGMU14



Fox squirrel (*Sciurus niger*)



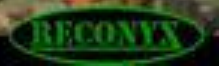
2017-11-02 8:58:00 AM M 1/5

7°C

Fox squirrel (*Sciurus niger*)



SIGMU14



Fox squirrel (*Sciurus niger*)



Fox squirrel (*Sciurus niger*)

It is often difficult to distinguish these squirrels without color, but in this case, the large head size and thickness of the tail is distinctive. You can compare head size to the gray squirrel in the next photo, taken on the same log.



Eastern gray squirrel (*Sciurus carolinensis*)

